

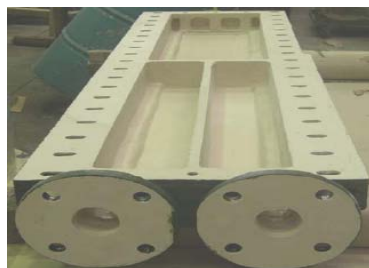


### Course Water Filter Vessel

Protection against Sea Water

**Industry:** Oil & Gas  
**Product:** Polyglass VEF, Corroglass 600 series, Plasmert ZF  
**Expertise:** Internal & Externally Coating Tanks & Vessels

These new vessels are prepared by rebating the flanges to protect against crevice corrosion. Then Polyglass VEF and Corroglass 600 series is applied to the internal of the vessel to a thickness of 1250 microns. The external of the vessel is coated with Plasmert ZF to combat atmospheric sea spray.



### Motor Oil Cooling Water Box

Sea Water Corrosion Repair & Protection

**Industry:** Power  
**Product:** Corroglass 600 series, glass matting & Plasmert ZF  
**Expertise:** Repair & Corrosion Protection

This water box was severely corroded by seawater and was leaking badly. Corrocoat repaired the leaks and pitting and rebuilt the division plates using 600 series and glass matting. The external surfaces were protected by using Plasmert ZF.



### Fluiglidle Treatment of 14/12 HSC Pump

Major Pump Manufacturer

**Industry:** Water  
**Product:** Corroglass 600 series, Plasmert ZF, Fluiglidle  
**Expertise:** Efficiency Improvement

Corrocoat regularly coat new pumps for pump manufacturers. This pump was treated with 600 series to prevent corrosion, followed by one coat of Fluiglidle which typically improves efficiency by 4-6%. An external coat of ZF is applied to provide corrosion protection to the exterior of the pump.



### Seawater Fire Main

Oil Refinery

**Industry:** Oil & Gas  
**Product:** Corroglass 600 series & Plasmert ZF  
**Expertise:** Internal & External Pipe coating

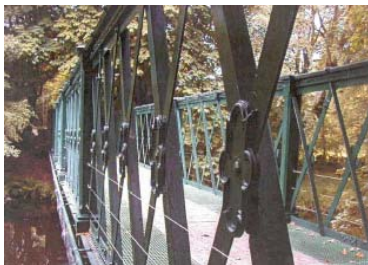
This reducing spool forms part of a seawater fire main. Without protection severe corrosion would occur rapidly in this aggressive sea water environment. The design life of the firemain was 15 years so Corrocoat was selected to provide corrosion protection internally with 600 series and external protection with ZF.



## Armagel Provides Abrasion Resistance to Pump Refurbishment & Coating Hamworthy Pump Casing

**Industry:** Marine  
**Product:** Corroglass 600 series, Armagel, Plasmet ZF  
**Expertise:** Repairs and Rebuilds

Armagel is a durable coating offering excellent abrasion and chemical resistance. Armagel may be used on its own or as a top coat for Corroglass and Polyglass materials. This cast bronze pump casing was internally lined with 600 series followed by Armagel. Two coats of ZF were applied to the external of the pump casing.



## UK Victorian Bridge Refurbishment Architectural Details Recreated

**Industry:** Structural Steel  
**Product:** Plasmet ZF & Polyglass 600 series  
**Expertise:** External coating of structural steel

This Victorian bridge was painted regularly but still suffered degradation from corrosion. Corrocoat carried out repairs and full corrosion protection to extend the life of the bridge and significantly reduce the maintenance. Corrocoat used casting techniques to recreate cast iron architectural detail that was damaged beyond repair by corrosion and weathering.



## Sea Water Venturi Cavitation, Undercutting & Severe Corrosion Around Flange Area

**Industry:** Power  
**Product:** Internal - EA / EB Series, Fluiglide E. Externals - Plasmet ZF.  
**Expertise:** Internal & External Coating of Pipe Work

Corrocoat EA and EB series provide good resistance to erosion, cavitation and impact when used at thicknesses above 1.5mm. These cast iron components were originally glass lined and were fully refurbished with the above Corrocoat system.



## Pipe Bridge Restored Structurally Dangerous

**Industry:** Water & Waste Water  
**Product:** Plasmet ZF & 600 series.  
**Expertise:** Structural Steel

A structural survey revealed this pipe bridge required extensive repairs and corrosion protection. After the repairs, the entire structure and pipe externals were treated with two coats of Plasmet ZF. The bridge and pipe were re inspected 7 years later and found to be corrosion free.



## Corrosion Protection of Fan Designed For Use In Aggressive Conditions

**Industry:** Process  
**Product:** 600 series & Plasmet ZF  
**Expertise:** Coating Plant & Equipment

This unit was developed for use that incorporated 1% hydrochloric acid, 500ppm monochlorobenzene and moist air at 30°C. Corroglass 600 series was used for the internal lining and impeller and two coats of Plasmet ZF used on the fan externals.